

**AGROTEL®**

# AGROTEL

## Product overview

YOUR SPECIALIST FOR TEXTILE SOLUTIONS



[www.agrotel.eu](http://www.agrotel.eu)

## AGROTEL – that's us

AGROTEL is your specialist for textile solutions in agriculture, environmental technology, trade and industry.

For over 30 years we have been developing and producing wind protection systems, textile doors, textile hangar systems, biogas components and Smart Solutions. We are the pioneers in this sector and, as an internationally active family business we stand for the quality and durability of our products.

All our products are developed, planned and manufactured in our own factory at our site in Neuhaus am Inn (DE), Lower Bavaria. We find the best solution for every requirement and operate according to the “all from one source” principle with the AGROTEL manufacturer's guarantee.

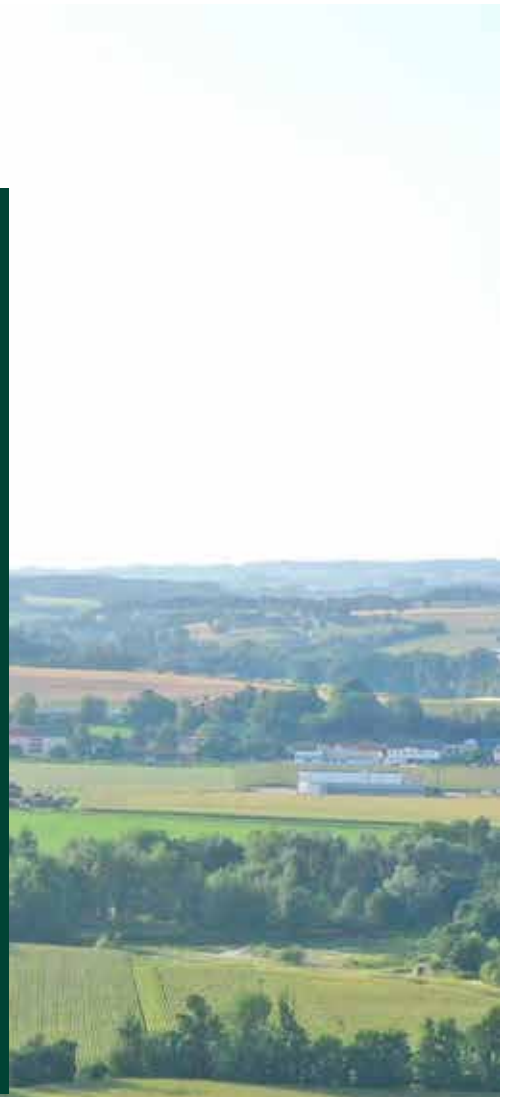
AGROTEL's quality and environmental management are certified in accordance with ISO 9001 and ISO 14001.



# Welcome



The management team (f.l.t.r): Valentin Schmedleitner, Elisabeth Laner, Cyriak Laner



# AGROTEL – This is what sets us apart

From consulting to planning, design and production to assembly:

we respond to your wishes and produce customised solutions with a focus

on quality, animal welfare, labour efficiency and cost-effectiveness.



## Consulting, Planning and Project Management

Our qualified consultants will find the most suitable solution in accordance with your wishes and requirements.



## Technical Design

With our experienced staff in our in-house design and statics department, we can react flexibly to your needs and also offer our support with the official approval of your project.





## Production Made in Germany

With our unique technical-textile fabrication plant with state-of-the-art production machinery, the company-owned steel construction, the in-house metalworking shop as well as a warehouse and logistics centre at our site in Bavaria we can guarantee optimum quality and flexibility. Side-wall ventilation systems can be technically welded together in one working process up to 120 m length.

## Assembly & Service

Our own assembly teams take care of the professional installation of your project and with their expertise ensure a professional result.



## WSS1 - System 1

### FEATURES

- » Winding method: opening from bottom to top, fixed at the top
- » Max. dimensions: 120 m x 6 m
- » Type of drive: plug-in motor or geared motor



## WSS2 - System 2

### FEATURES

- » Winding method: opening from top to bottom, the sheeting is either overlapping or folded together
- » Max. dimensions: 120 m x 4 m
- » Type of drive: plug-in motor or geared motor



## WSS3 - Thermocurtain

### FEATURES

- » Winding method: opening from top to bottom
- » Thermal insulation
- » Max. Dimensions: 80 m x 4,5 m
- » Type of drive: plug-in motor or geared motor



## WSS4 - System 4

### FEATURES

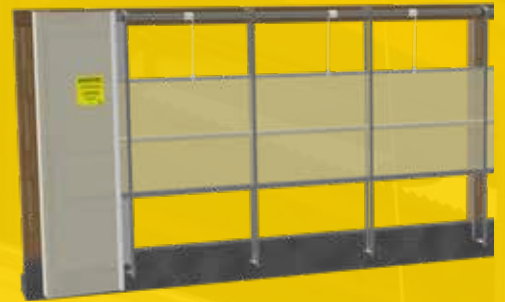
- » Winding method: allrounder, opening possible from top and bottom, middle position for shading
- » Opening degree and position can be controlled independently from each other
- » Max. dimensions: 120 m x 4,5 m
- » Type of drive: plug in motor or geared motor



## WSS5 - System 5

### FEATURES

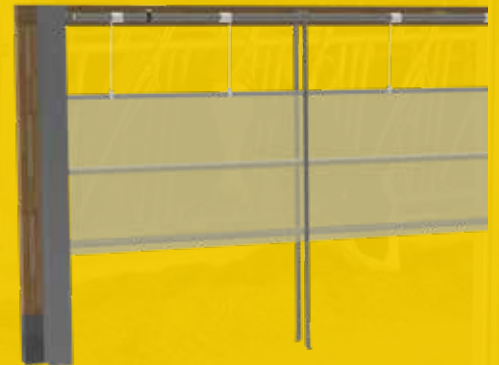
- » Winding method: allrounder, opening possible from top and bottom, middle position for shading
- » Drive-through possibility
- » Max. dimensions 120 m x 6 m
- » Type of the drive: plug-in motor or geared motor



## WSS5.1 - Ventilation Door

### FEATURES

- » Winding method: all-rounder, opening possible from top and bottom, middle position for shading, opening upwards it serves as entrance gate
- » Movable tensioners
- » Max. dimensions: 120 m x 6 m
- » Type of drive: plug-in motor or geared motor



## Examples of use



Animal welfare dairy barn with system 4 and textile gates



Outdoor climate pigsty with curtains



Animal welfare goat house in textile construction method with curtains in shading position

## WST1 Sliding Curtain

### FEATURES

- » Opening type: lateral sliding
- » Max. dimensions: 10,0 m x 4,0 m



## WST2 Sliding Door

### FEATURES

- » Opening type: lateral sliding
- » Max. dimensions: 18 m x 6 m



## WST4 Double Roll Up Door

### FEATURES

- » Door for large openings, possibility of movable tensioners
- » Max. width: 8 m single-field- /75 m multi-field, Max. height: 6 m
- » Radio remote control available
- » Type of drive: plug-in motor or geared motor



## WST11 Double Double Roll Up Door

### FEATURES

- » Door for very large openings, possibility of movable tensions
- » Max. width: 8m single-field- / 75 m multi-field, Max. height: 10 m
- » Radio remote control available
- » Type of drive: plug-in motor or geared motor



## WST7 Rib Roll Up Door

### FEATURES

- » Door for barns, service aisles and hall entrance doors
- » Max. width: 4,5 m standard
- » Max. height: 4,5 m standard
- » Radio remote control available
- » Type of drive: plug-in motor



## WST9 Big Rib Roll Up Door

### FEATURES

- » Fast moving door for feeding table, garage and machine hall
- » Max. width: 7 m single-field, 21 m multi-field
- » Max. height: 8 m
- » Radio remote control available
- » Type of drive: plug-in motor or geared motor



## WST6 Folding Door

### FEATURES

- » Large openings without intermediate supports
- » Max. width: 15 m, 25 m with stiffening column in the middle
- » Max. height: 10 m
- » Radio remote control available
- » Type of drive: geared motor



## Panels

### FEATURES

- » Fixed textile wall coverings
- » Use as gables, side walls, in riding arenas, in production halls, as dust protection etc.
- » Available as vertical or horizontal panels



## Light Ventilation Ridge

### FEATURES

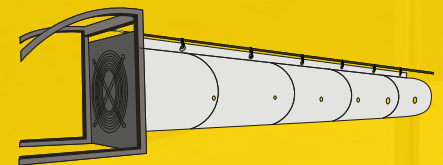
- » Completion of the AGROTEL light-ventilation concept
- » Width: 160 cm, Length per driving motor up to 80 m
- » Available versions: double-sided model and single-sided model



## Softair and Coolair Ventilation System

### FEATURES

- » Optimal stable ventilation for increased animal welfare
- » Softair variant for ventilation in calf pens and Coolair especially for cooling, for example in dairy barns



## Feeding System

### FEATURES

- » System for smoothly pushing back the forage
- » Important workload reduction for the farmer
- » More animal welfare due to permanently fresh feed quality
- » System developed with farmers and made of sturdy components



## Silo Schani - Silo Covering System



### FEATURES

- » System for mechanising the covering of clamp silos and the removal of fodder
- » Important workload reduction for the farmer
- » Conservation of resources through use of the multi-year tarpaulin

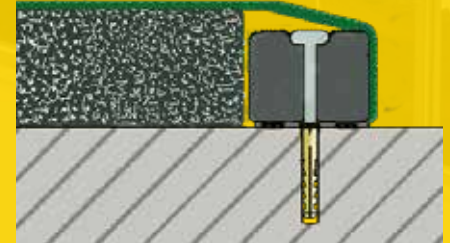


## Comfortex Cow Mattress

*Comfortex*

### FEATURES

- » Hygienic and durable lying surface for dairy cows and young cattle
- » Increased animal welfare and animal health through improved lying comfort
- » Cost savings due to lower litter requirements



## Softcaremat Tread Covering

**SoftCareMat**

### FEATURES

- » Slip-proof covering for walkways, waiting areas, milking areas and animal transporters



## Texwall mobile bulk goods walls

TEX WALL

### FEATURES

- » Specially developed for the storage of oilseed crops, maize and cereals.
- » Modules in two stand heights (2.4 m and 3.0 m)
- » Easy and quick assembly and disassembly possible
- » No floor fixing necessary



**Height:** 2,4 m, 3 m resp.

**Depth:** 1,0 m, 1,5 m resp.

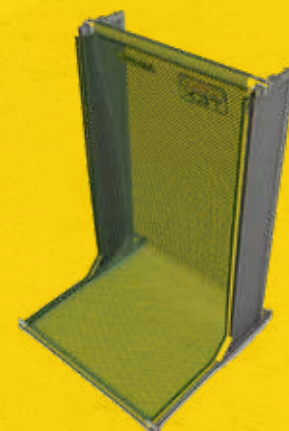
**Element spacing:** 1,9 m, 1,5 m resp.

## Woodtex mobile bulk goods walls

WOOD  
TEX

### FEATURES

- » Optimised bulk goods walls for the storage of wood chips
- » Versatile use and combination options
- » Lateral ventilation of the bulk goods through breathable fabric



**Height:** 3 m

**Depth:** 1,5 m

**Element spacing:** 1,9 m

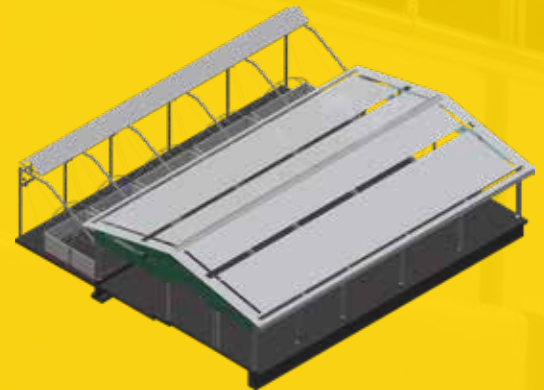
## Cosyhome Calf Village

Healthy animals, less work for the farmer: the AGROTEL calf village is an innovative animal welfare barn for the optimal housing of calves. Different micro-climate zones create a feel-good atmosphere for calves, while the well-thought-through concept enables simple one-man management.

AGROTEL<sup>®</sup>  
**PATENT PROTECTED**  
Pan-European patent protection

### FEATURES

- » **Time saving:** simple one-man management through optimised path concept and patented tilting function for easy mucking out of the group igloo
- » **Healthy and productive animals:** micro-climate zones, bright interior, perfect ventilation
- » **Short construction times:** individual expansion options as space requirements increase
- » **Long-lasting construction:** hot-dip galvanised steel construction and high-quality PVC membrane covering



Important workload reduction thanks to tilting function



Rapid muck removal with loader



Easy cleaning of the igloos



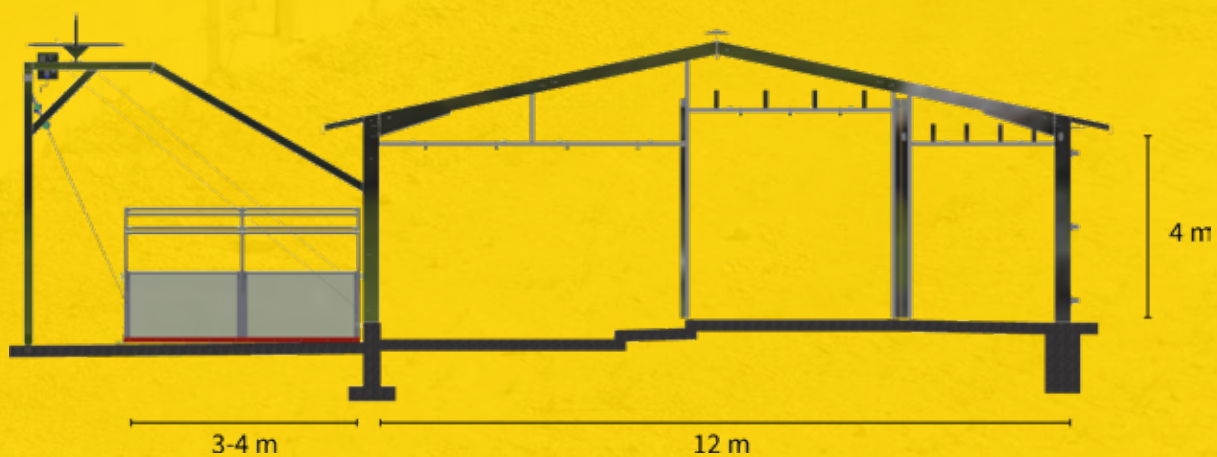
Bright interior and optimal air conditions



Group housing with plenty of space



Pleasant light due to white roofing



## Steel Pipe Tunnel Hall

Arched halls have proven themselves as flexible storage halls for numerous areas of application in agriculture and industry. The self-supporting halls can be quickly assembled at almost any location and flexibly extended. The storage halls are supplemented with customised gables and gates in accordance with the customer's wishes.

### FEATURES

- » 5 to 12 m self-supporting spans
- » Optimum cost-performance ratio
- » Flexible assembly and dismantling as well as expandable
- » Short construction time
- » Anchoring possible without concrete foundation
- » High-quality materials: galvanised steel and PVC membrane covering

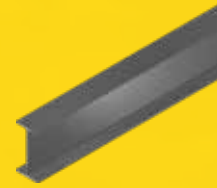


- ① **Type 1200** W = 12 m, H = 5,80 m
- ② **Type 920** W = 9,20 m, H = 4,85 m
- ③ **Type 800** W = 8,00 m, H = 4,00 m
- ④ **Type 620** W = 6,20 m, H = 4,00 m / 4,65 m
- ⑤ **Type 500** W = 5,00 m, H = 3,50 m



## I-Beam Tunnel Hall

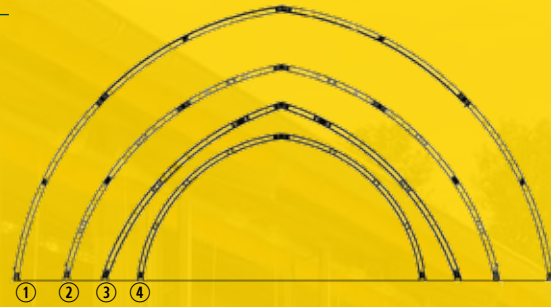
I-Beam Tunnel Halls consist of rolled double-T girders, which are covered and clad with technical textiles. This type of construction is used for application with high static requirements.



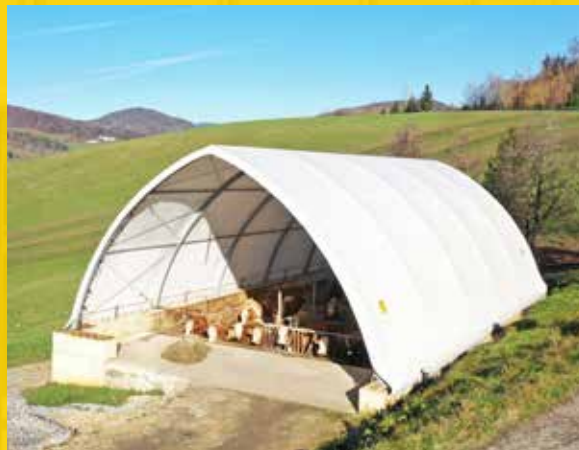
IPE-beam: particularly resistant

### FEATURES

- » Very large, self-supporting spans up to 15 m
- » Statically verifiable
- » Flexible assembly, dismantling and expansion
- » Short construction time
- » Anchoring possible without concrete foundation
- » High wind- and snow loads
- » High-quality materials: galvanised steel and PVC membrane covering



- ① Type 1500 W = 15,00 m, H = 7,50 m
- ② Type 1200 W = 12,00 m, H = 6,00 m
- ③ Type 1000 W = 10,00 m, H = 4,95 m / 5,75 m
- ④ Type 800 W = 8,00 m, H = 4,00 m



## Monopitch Roof Halls

Monopitch Roof Halls are particularly suitable as storage roofs, machine halls and extensions to existing buildings and stables thanks to the lateral accessibility and the large entrance heights.

### FEATURES

- » Large entrance heights
- » Optimum lateral accessibility
- » Short construction times
- » Self-supporting spans up to 15 m
- » High-quality materials: galvanised steel and PVC membrane covering



## Beam Halls

The construction enables large, self-supporting spans. Whether it's a warehouse, stable building, production facility, stall roofing or indoor riding arena- we build customised structures in accordance with the customer's wishes as well as legal and statics requirements.

---

### FEATURES

- » Optimum use of space due to slim profiles
- » Freestanding, without support column up to 30 m, up to 60 m with supports
- » Short construction times, flexible in assembly and dismantling
- » Anchoring without concrete foundations possible
- » High-quality materials: galvanised steel and PVC membrane covering

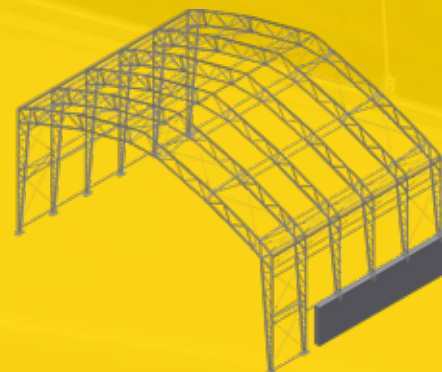


## Lattice Beam Hall

Whether industrial halls, warehouses, machine halls, sports halls or production halls - Lattice Support Pitched Roof Hangars are the optimal solution for large self-supporting spans.

### FEATURES

- » Perfect use of space
- » Large self-supported spans up to 80 m possible
- » Short construction times, flexible in assembly and dismantling
- » Very high wind- and snowloads
- » High-quality materials: galvanised steel and PVC membrane covering



## Examples of use



Indoor riding arena



Recycling plant



Animal welfare sheep barn



Storage hall

## Emission protection

Depending on the requirements, two different covers for slurry tanks are used, which take into account the current regulations on emission protection.



**PATENT PROTECTED**  
Pan-european patent protection

### Self-supporting Domed Roof

#### FEATURES

- » Container diameter up to 22 m
- » Reliable emission protection
- » Free standing galvanized steel construction
- » Fast assembly during operation, no need to empty the container
- » Large service openings possible
- » Robust and well-proven fastening technique with tensioning ratchets
- » Additional corrosion protection due to inner membrane



## Container Cover with central support

### FEATURES

- » Standard container diameters up to 40 m
- » Reliable emission protection
- » Stainless steel central support
- » Additional belt substructure
- » Very high wind- and snowloads
- » Service openings possible



## Double Membrane Gas Storage

The success and the efficiency of the AGROTEL Double Membrane Gas Storage are due to its robust design and the well-proven interaction of the individual components. The cover can be mounted on reinforced concrete and steel tanks.

### FEATURES

- » High quality materials: all metal components are made of stainless steel, membrane made of special technical textile
- » High operating pressure
- » Short delivery and construction times
- » Tank diameter up to 40 m
- » Storage volumes from 29 % to 50 % of a sphere



## 75%-Double Membrane Gas Storage

The AGROTEL 75% Double Membrane Gas Storage is the perfect solution for efficient gas storage. Very large volumes can be realised with low acquisition costs.

### FEATURES

- » High working pressure from 10 up to 50 mbar
- » Big volumes
- » Suitable for high wind- and snowloads
- » High operating reliability
- » Low investment and maintenance costs



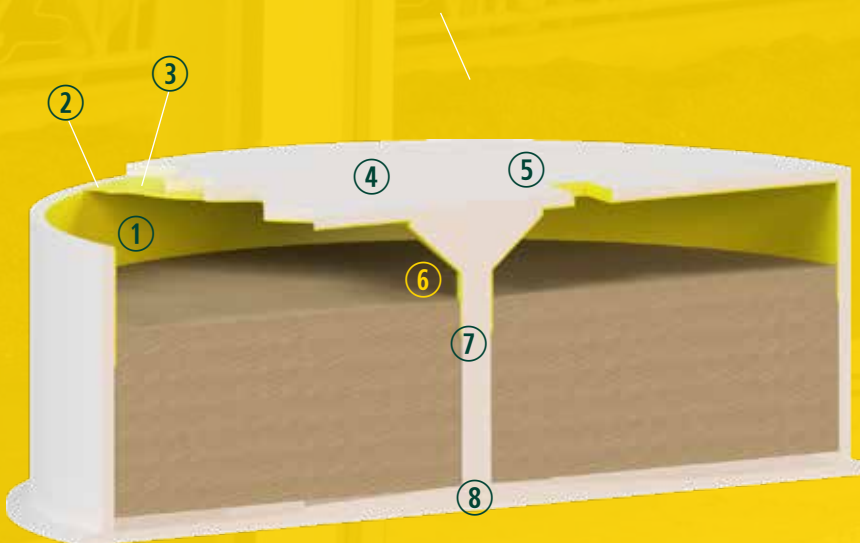
## WireTarp concrete protection



For more than 20 years WireTarp has been reliably used as corrosion protection for reinforced concrete tanks. By applying WireTarp, future cost-intensive refurbishment measures can be avoided and the economic viability of the facility can be increased. AGROTEL concrete protection products are market-leading and state-of-the-art in reinforced concrete container construction technology.

### FEATURES

- » Well-proven protection of concrete surfaces against corrosion
- » Increases the profitability of your plant
- » Avoids downtimes
- » Weather-independent installation
- » Absolute adhesion and impermeability
- » Long term operating guarantee



### CONSTRUCTION

- ① WireTarp pre-finished wall covering
- ② Wall / ceiling weld seam
- ③ Ceiling membrane
- ④ Concrete ceiling
- ⑤ Cut-outs and service openings
- ⑥ Central column support-membrane
- ⑦ Central column with head
- ⑧ Concrete baseplate

### MATERIAL

- » PP loop-weave fabric (on concrete side)
- » Full-surface PP-coating (shuttering side)
- » Impermeable to gas and liquids
- » Ensures permanent resistance to aggressive materials

## SaniTarp concrete refurbishment

In order to protect the concrete walls of biogas fermenters retrospectively, AGROTEL has developed SaniTarp, a cost-effective and efficient renovation system for existing tanks.

**SANITARP**

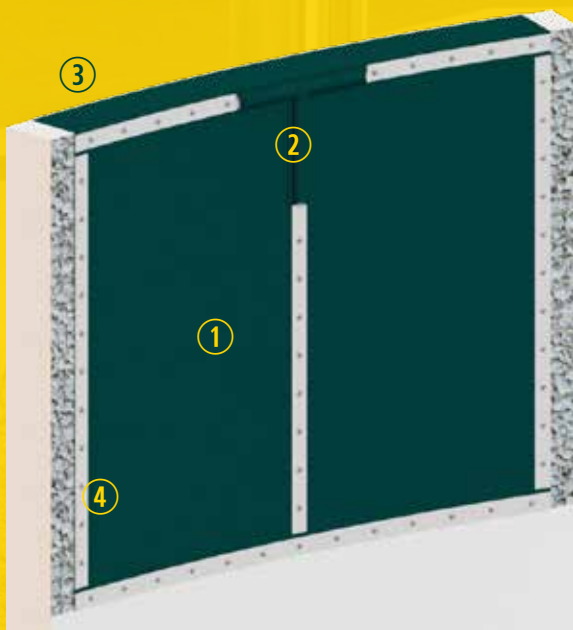
AGROTEL

**PATENT PROTECTED**

Pan-European patent protection

### FEATURES

- » Well-proven protection of concrete surfaces against corrosion
- » Weather-independent refurbishment
- » Short refurbishment times
- » Quick and simple installation
- » Mechanical stainless steel fastening
- » Optimum price-performance ratio



### CONSTRUCTION

- ① SaniTarp Concrete Refurbishment Membrane
- ② Over weld fastening
- ③ Crown protection
- ④ Stainless steel (1.4571) fixings

### MATERIAL

- » PP-coating: gas tight and media resistant
- » Fabric base made of PP: covers all mechanical requirements

## Liquid tanks

### FEATURES

- » Suitable for the storage of rainwater, waste water, extinguishing water or liquid fertiliser
- » Volumes from 5 to 1200 m<sup>3</sup>
- » Made of special technical textiles



Tank for liquid fertiliser storage



Storage for liquid fertiliser



Waste water tank



Rainwater storage tank



Extinguishing water reservoir

## Lagoons

---

### FEATURES

- » Earth basin lining for the storage of liquid manure, slurry and silage leachate
- » Equipped with leak detection system
- » Lagoon cover: floating or fixed



Floating or fixed lagoon cover



## External Gas Storage

---

### FEATURES

- » Gas storage tanks for use in enclosed rooms or on roofed areas
- » Volumes available from 5 to 5000 m<sup>3</sup>



# References

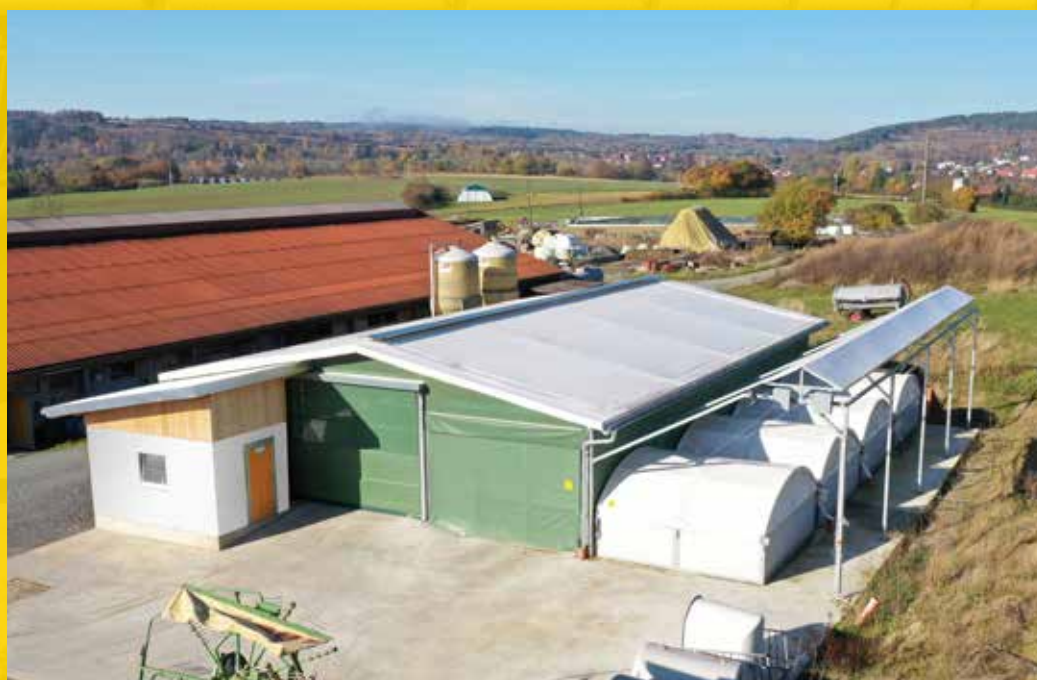


**MACHINE HALL WITH CANOPY**

**BIOGAS PLANT**



**DAIRY FARM AND CATTLE FATTENING FARM**



**ANIMAL WELL-BEING CALF HOUSING**



# AGROTEL Product overview

YOUR SPECIALIST FOR TEXTILE SOLUTIONS

## **AGROTEL GMBH**

HARTHAM 9  
94152 NEUHAUS AM INN  
GERMANY

TEL.: +49 (0) 8503 914 99 0  
FAX: +49 (0) 08503 914 99 33  
E-MAIL: [INFO@AGROTEL.EU](mailto:INFO@AGROTEL.EU)

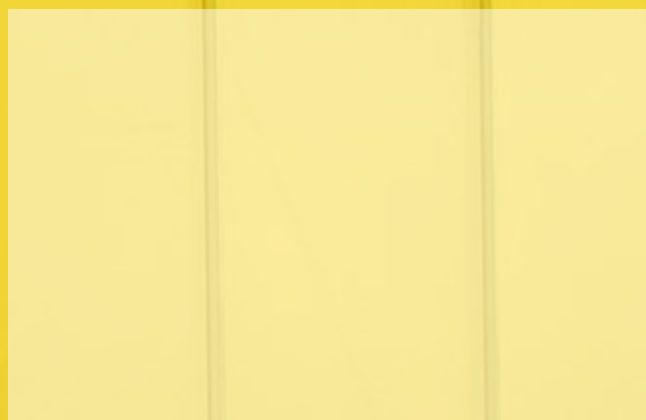
## **AGROTEL HANDELSGES.M.B.H.**

GOLDBERG 2  
4761 ENZENKIRCHEN  
AUSTRIA

TEL.: +43 (0) 7762 2777 0  
FAX: +43 (0) 7762 2777 33  
E-MAIL: [OFFICE@AGROTEL.EU](mailto:OFFICE@AGROTEL.EU)

 [agrotel\\_gmbh](https://www.instagram.com/agrotel_gmbh)

 [agrotelgmbh](https://www.facebook.com/agrotelgmbh)



YOUR CONTACT PERSON

# Agrotel

[www.agrotel.eu](http://www.agrotel.eu)